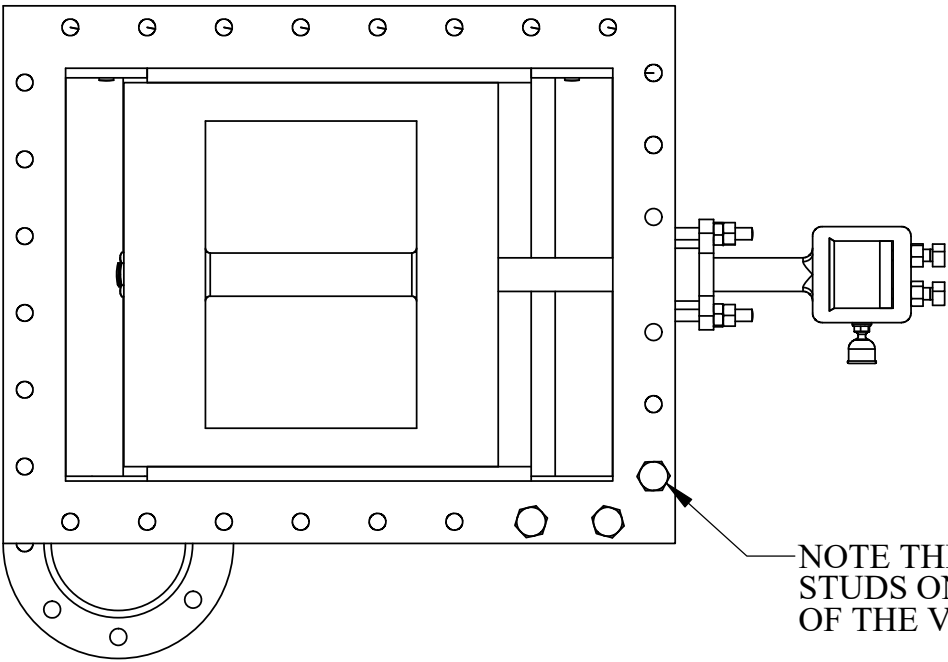
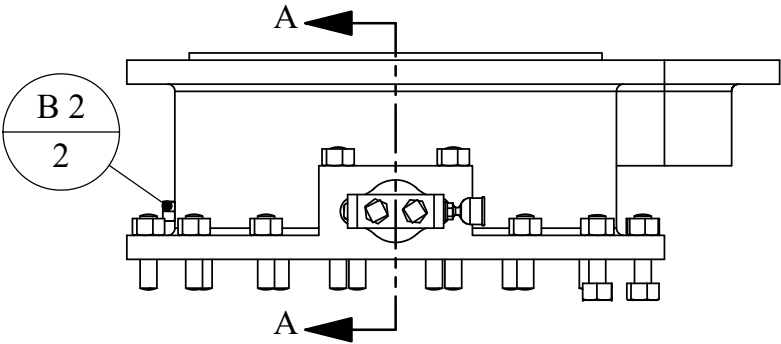
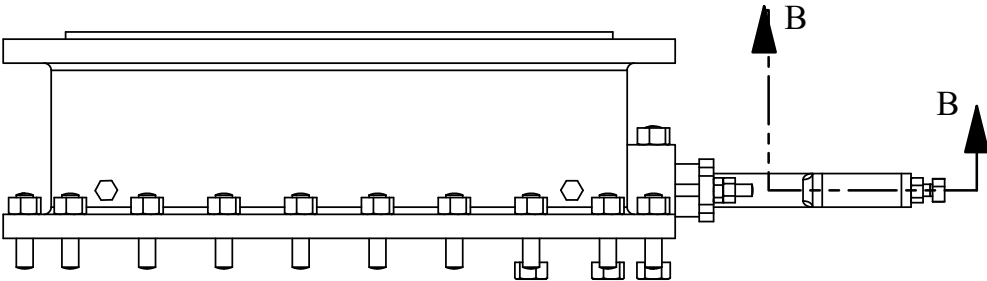
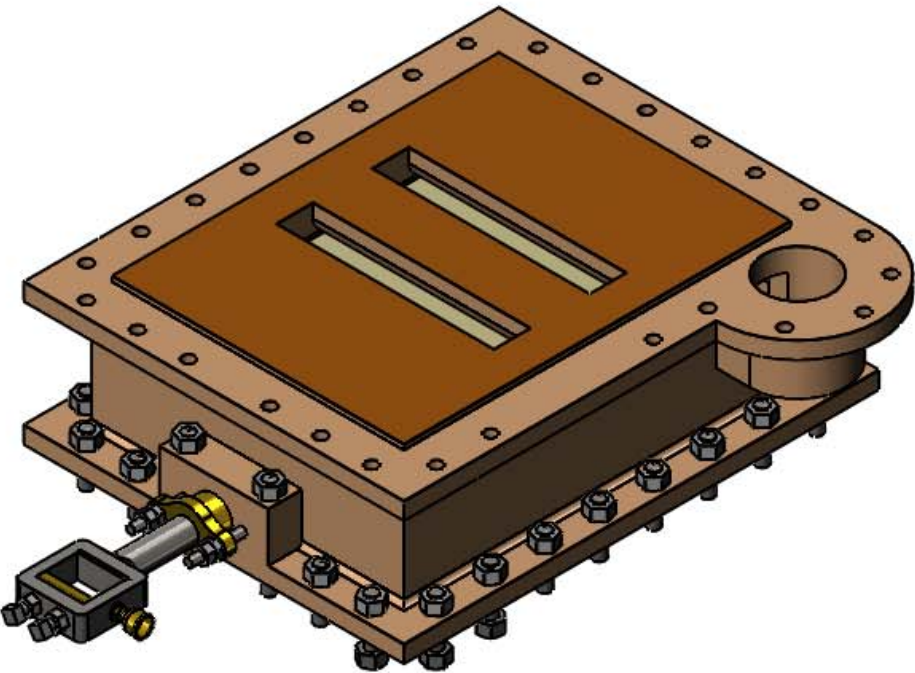


NOTE:
SECTIONS VIEWS A- A AND B -B
ARE SHOWN ON SHEET 2
COMPONENTS OF BOM NOT ON
SHEET 2 ARE SHOWN HERE

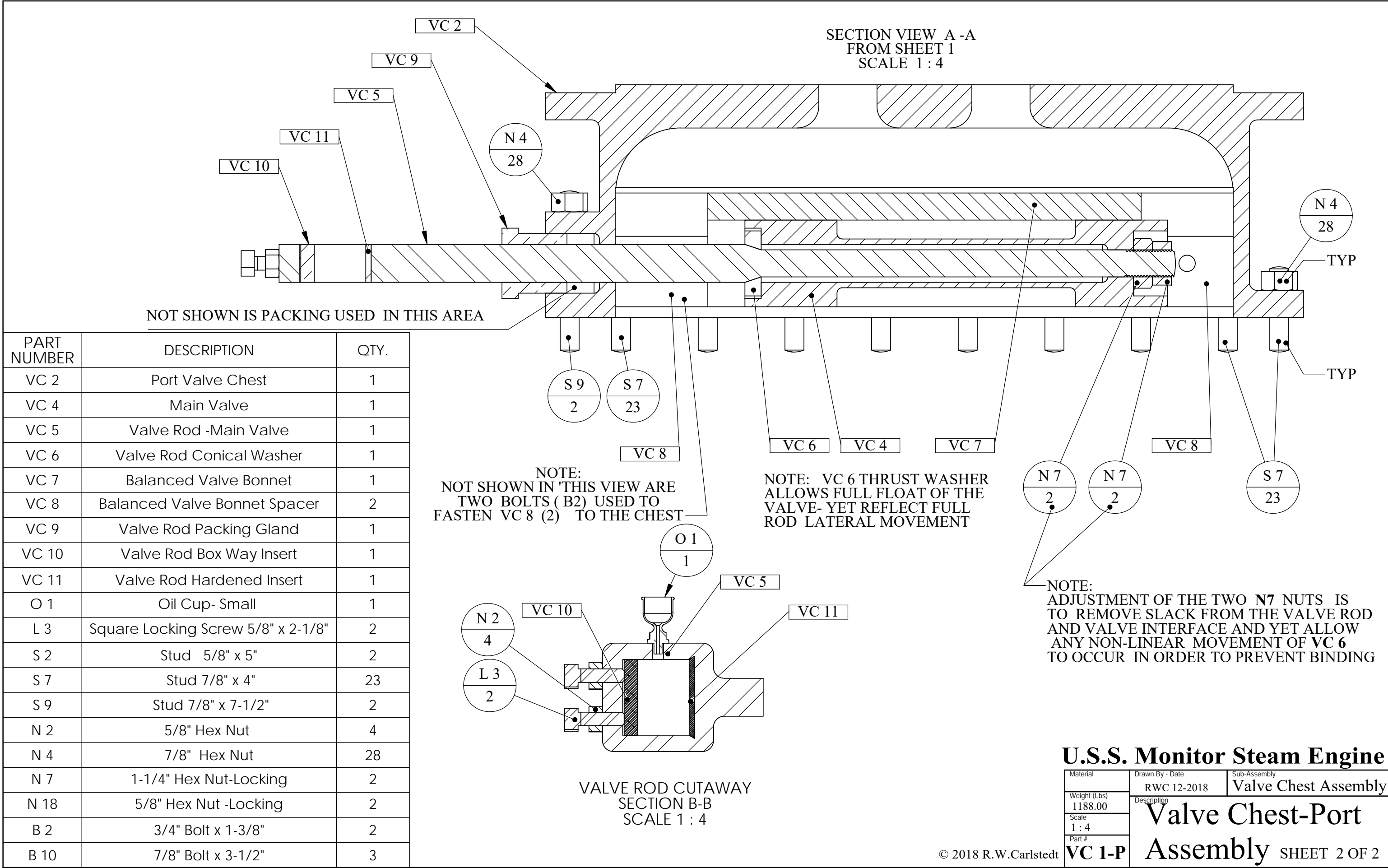


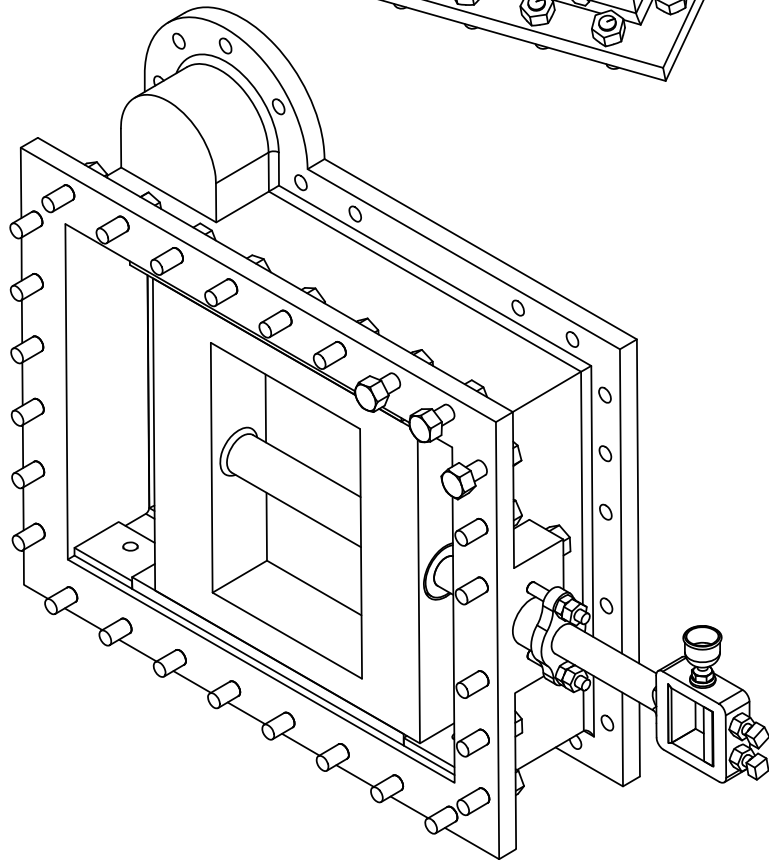
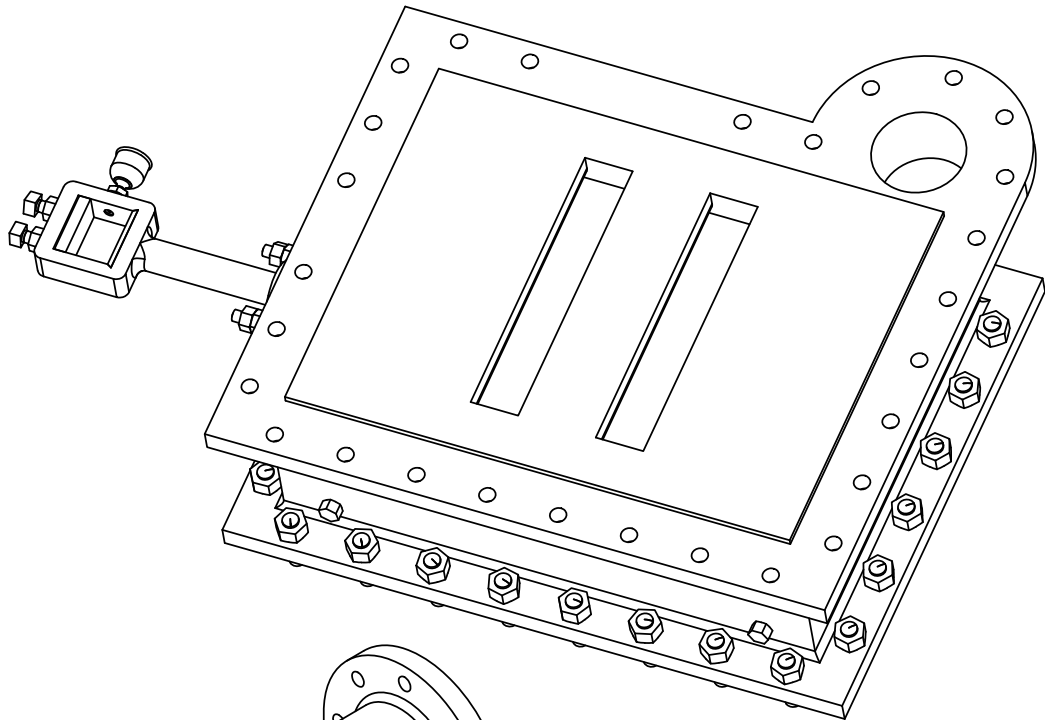
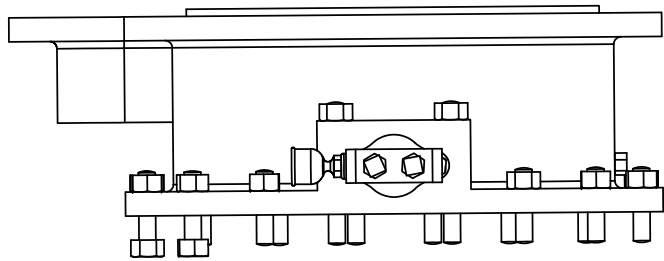
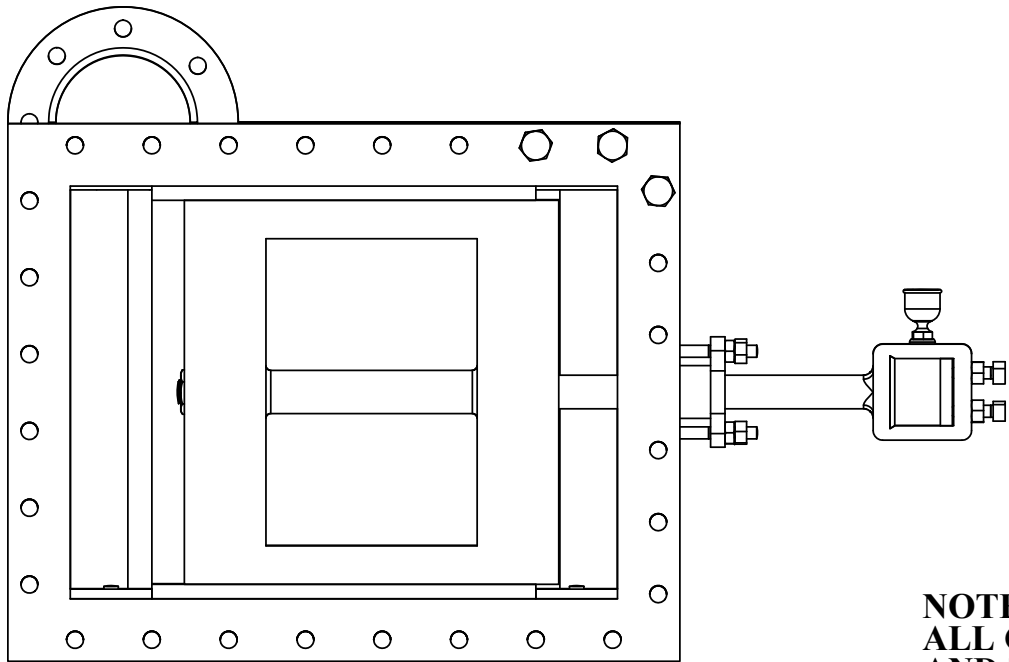
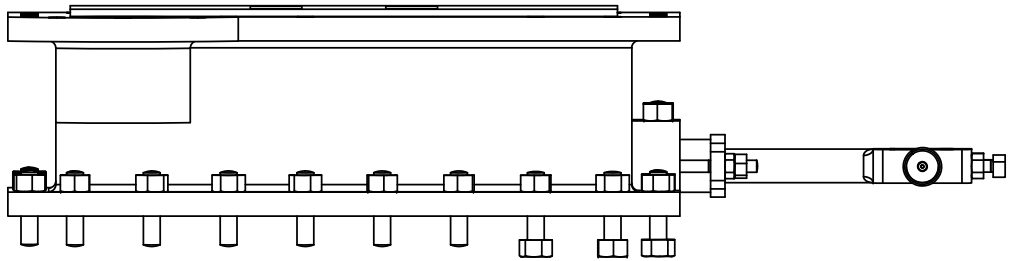
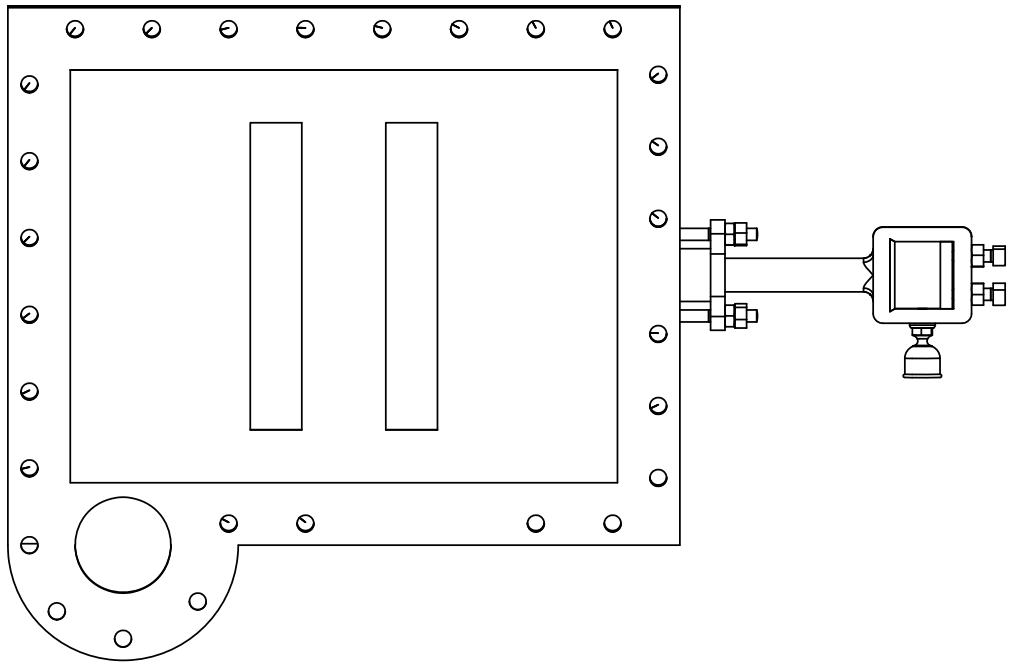
NOTE:
ALL COMPONENTS ARE THE SAME FOR BOTH
THE PORT AND THE STARBOARD VALVE CHESTS
EXCEPT FOR THE USE OF VC 2 OR VC 3 RESPECTIVELY.
THE B.O.M. ON SHEET 2 OF THIS DRAWING APPLIES
TO THE STARBOARD VALVE CHEST AS WELL EXCEPT
AS NOTED FOR THE MAIN CASTINGS- VC 2 OR VC 3



U.S.S. Monitor Steam Engine

Material	Drawn By - Date	Sub-Assembly
Weight (Lbs)	RWC 10-2018	Valve Chest Assembly
1188.00	Description	
Scale		
1:10		
Part #	VC 1-P	
Valve Chest-Port Assembly		SHEET 1 OF 2

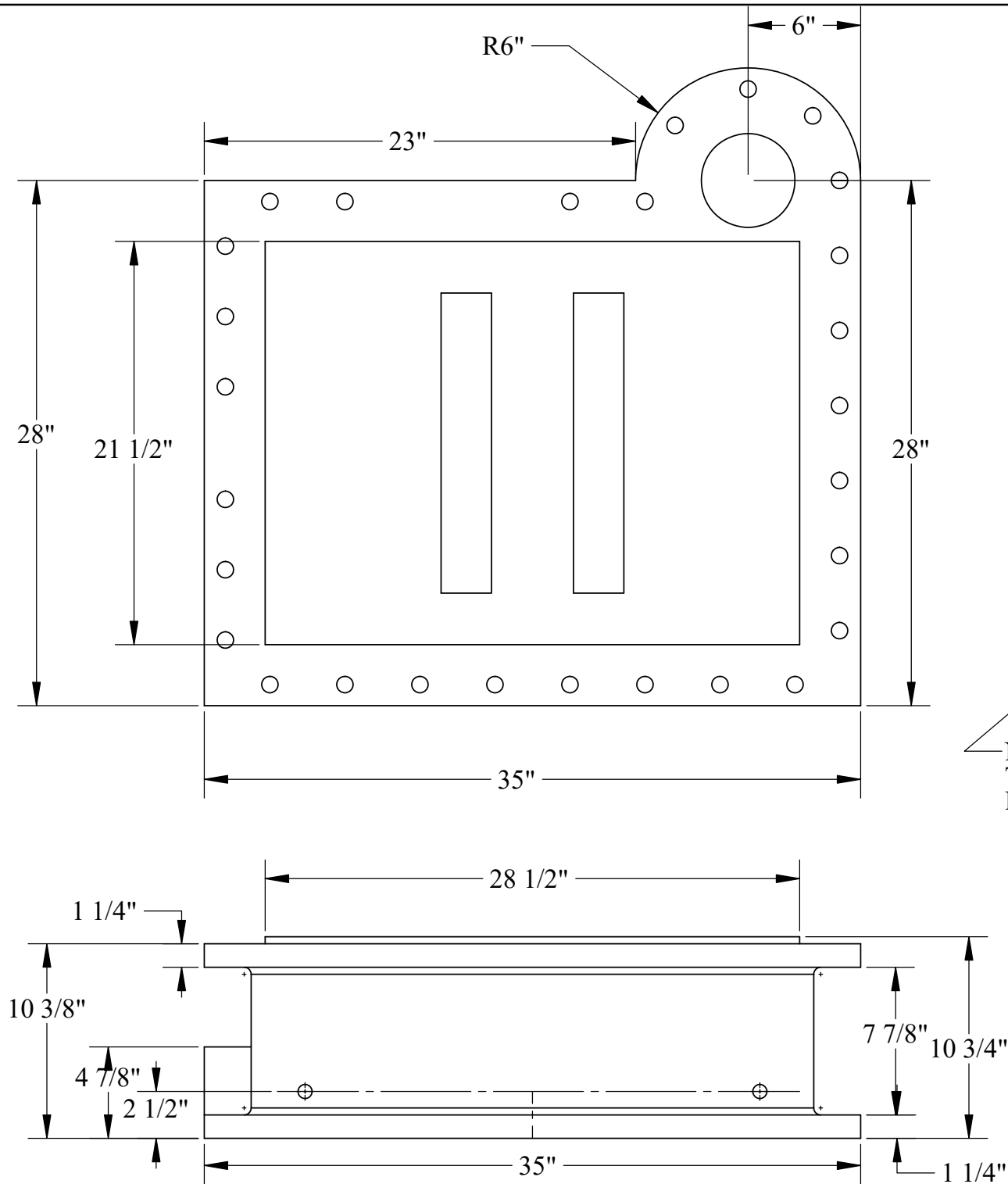




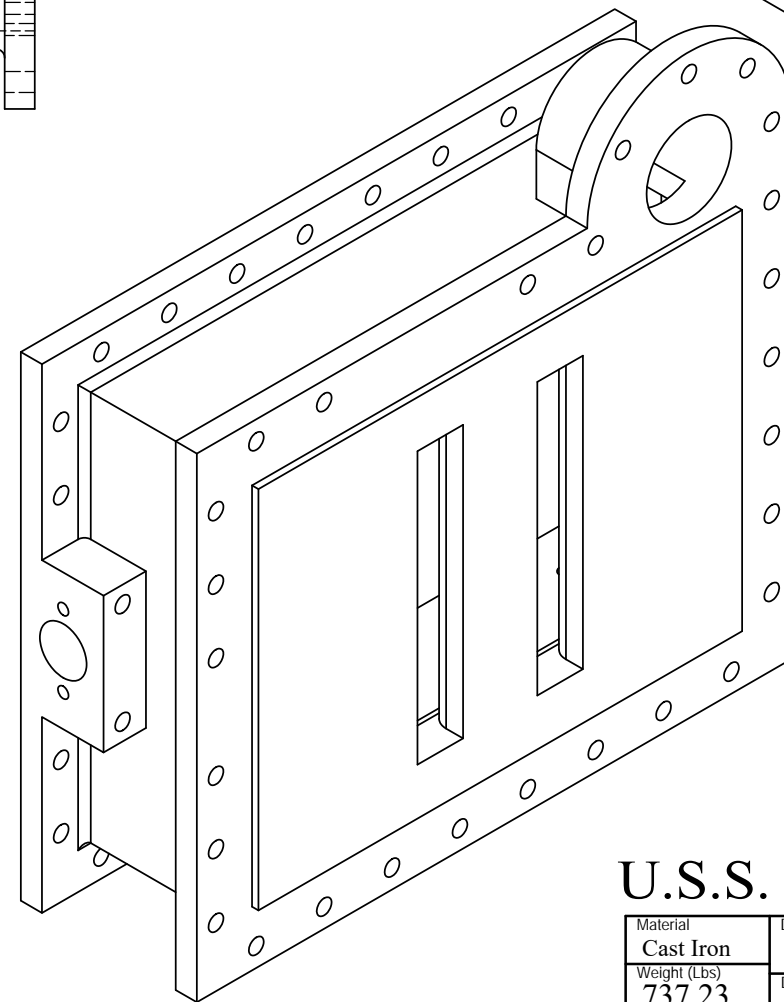
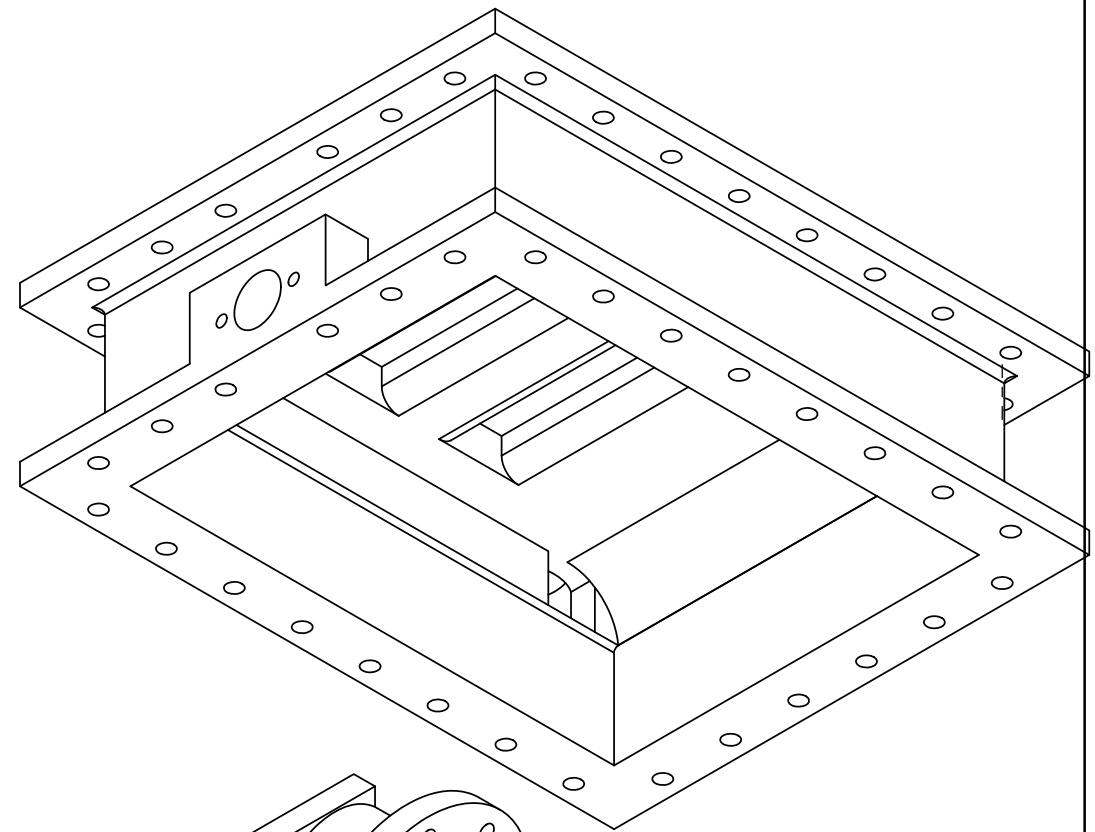
NOTE:
ALL COMPONENTS ARE THE SAME FOR BOTH THE PORT
AND THE STARBOARD VALVE CHESTS EXCEPT FOR THE USE
OF VC 2 OR VC 3 RESPECTIVELY AND THE B.O.M. ON SHEET 2
OF VC 1-P APPLIES TO THE STARBOARD VALVE CHEST AS WELL

U.S.S. Monitor Steam Engine

Material	Drawn By - Date	Sub-Assembly
Weight (Lbs)	RWC 10-2018	Valve Chest Assembly
Scale	Description	
1:10		
Part #	Valve Chest - Starboard Assembly	
VC 1-S		



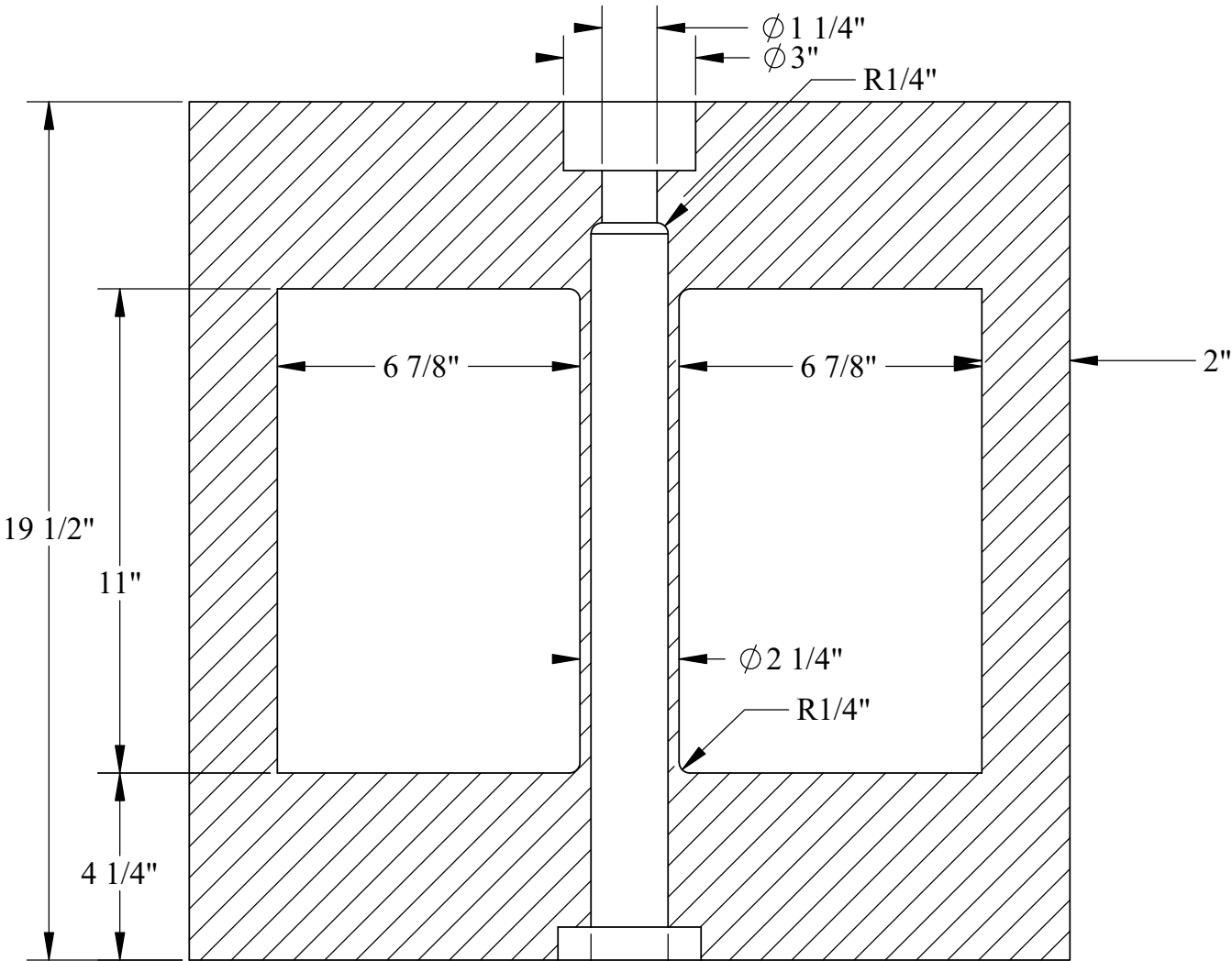
NOTE:
THIS SURFACED
FACED FOR VALVE
OPERATIONS



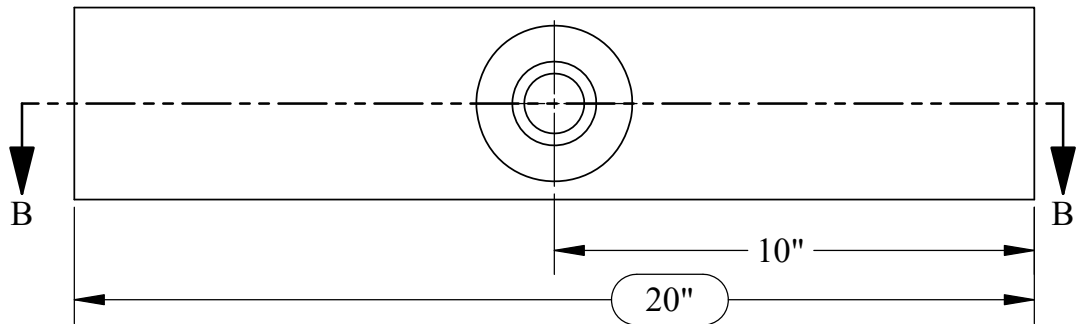
NOTE:
THE STARBOARD VALVE CHEST IS A MIRROR
IMAGE OF THE PORT VALVE CHEST-(VC 2)
CONSULT VC 2 FOR ALL DIMENSIONS ON
SHEET 2 AND SHEET 3

U.S.S. Monitor Steam Engine

Material Cast Iron	Drawn By - Date RWC 10-2018	Sub-Assembly Valve Chest
Weight (Lbs) 737.23	Starboard Valve Chest	
Scale 1:8		
Part # VC 3		

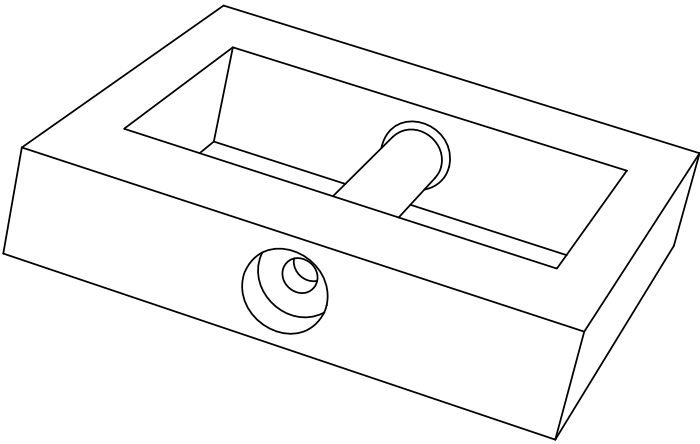


SECTION B-B



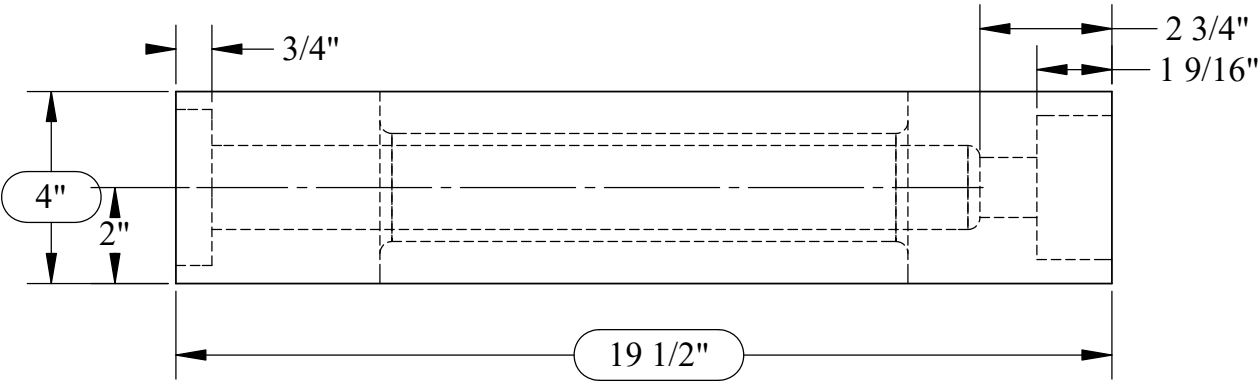
ATTENTION-
VALVE SURFACES
TO BE FACED AS NOTED
IN OVAL DIMS

NOTE:
THIS VALVE WOULD BE GROUND OR SCRAPED ON THE TOP,
BOTTOM, AND SIDE SURFACES TO PRECISELY FIT
THE VALVE BONNET (VC 7) AND STEAM CHEST FACE



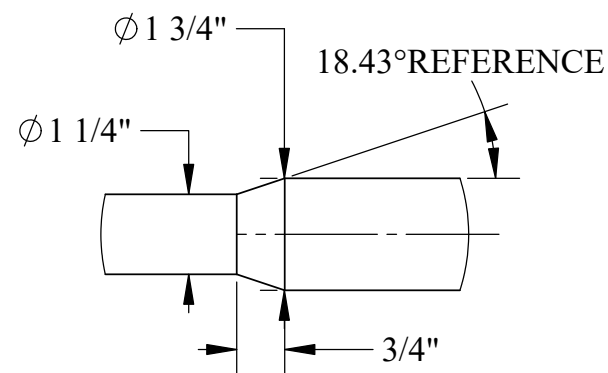
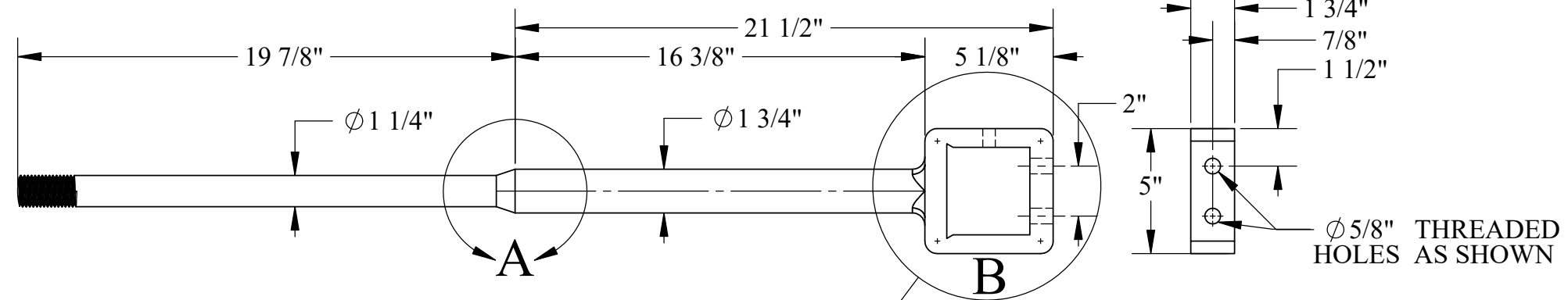
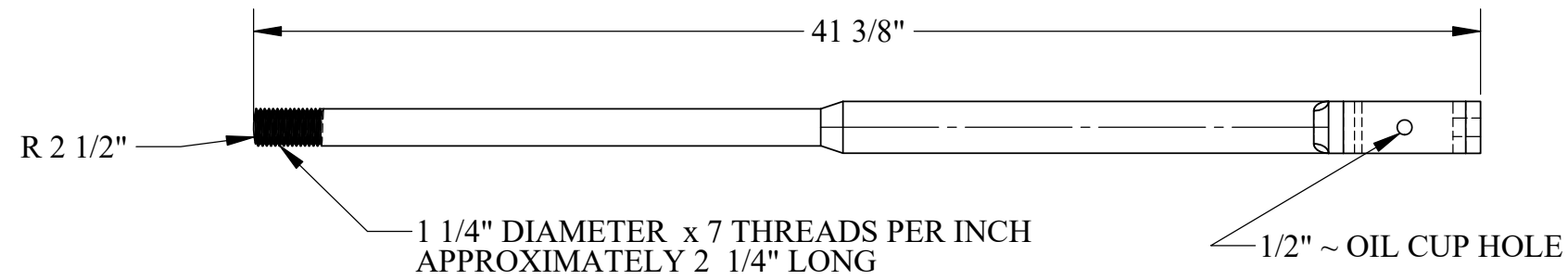
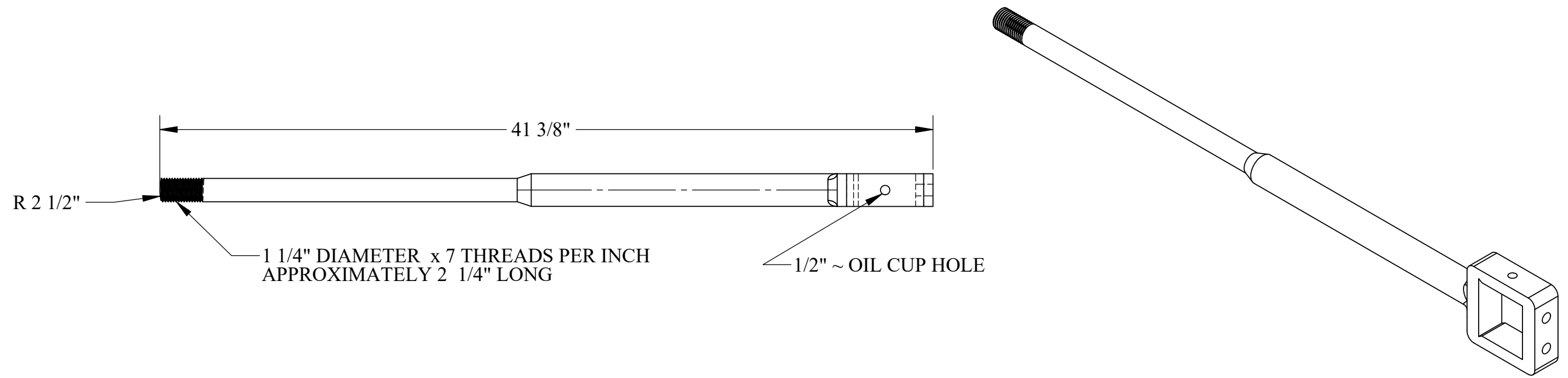
BEVELED WASHER
THIS END

VALVE ROD NUTS
THIS END

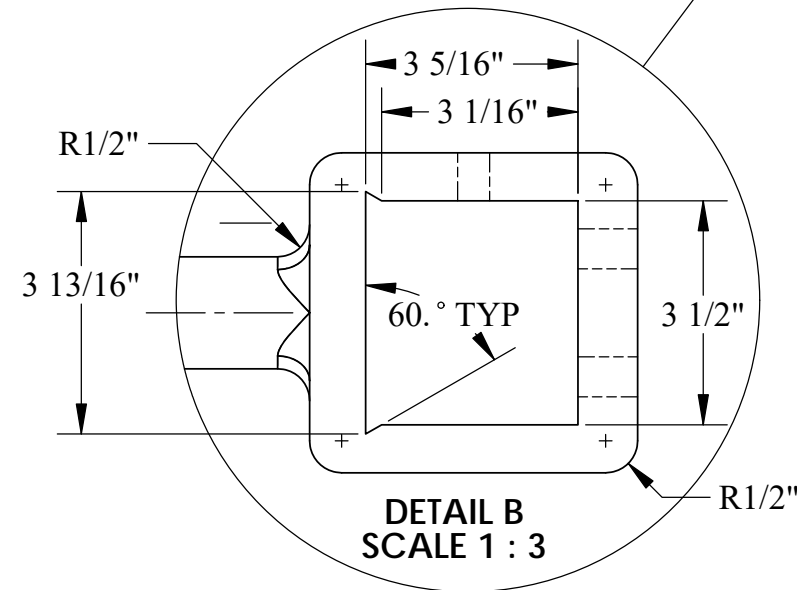


U.S.S. Monitor Steam Engine

Material Cast Iron	Drawn By - Date RWC 10-2018	Sub-Assembly Valve Chest
Weight (Lbs) 219.23	Main Valve	
Scale 1:4		
Part # VC 4		



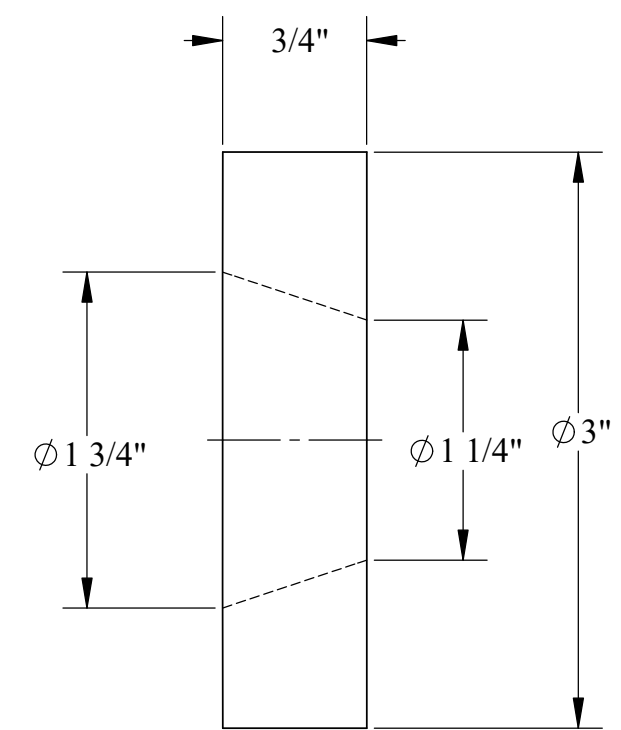
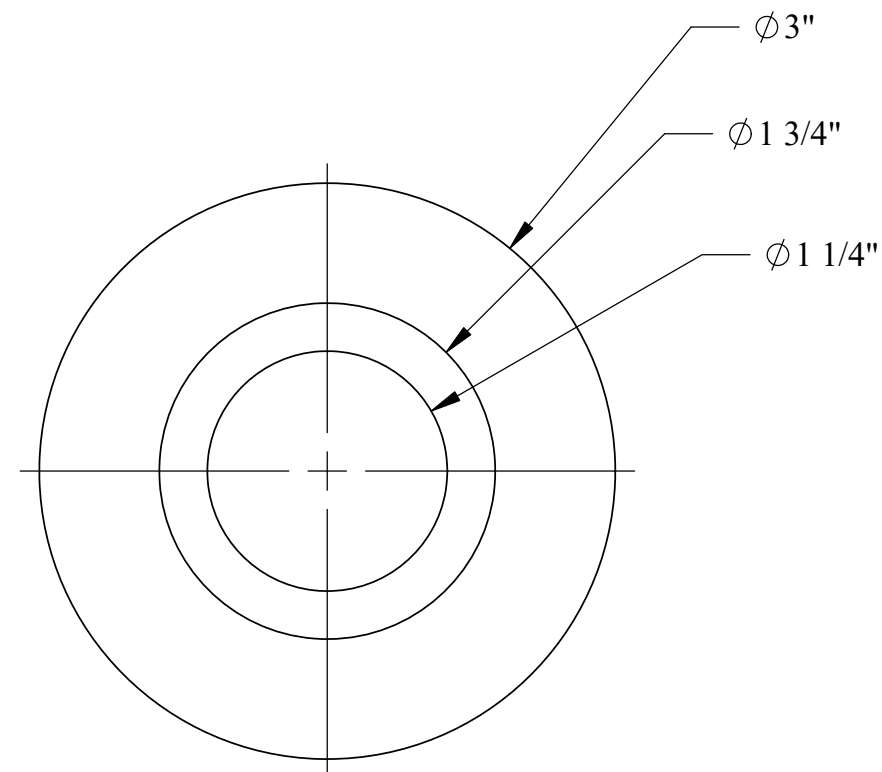
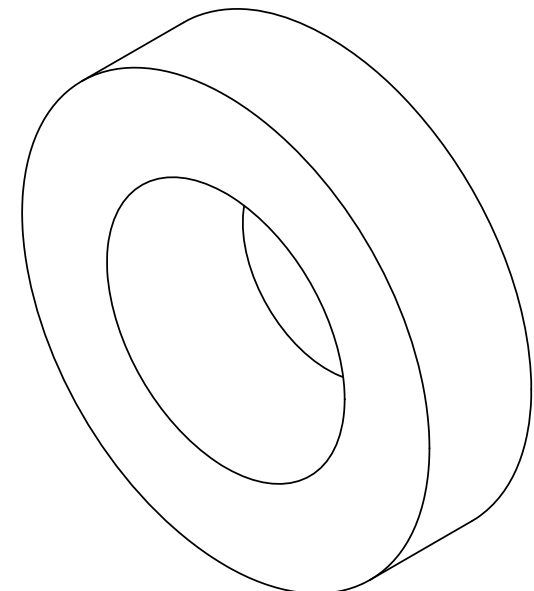
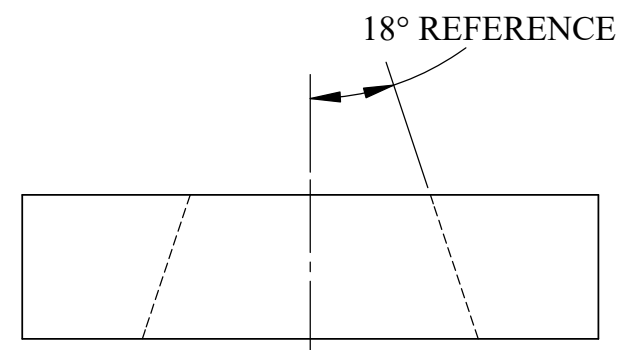
DETAIL A
SCALE 1 : 3



DETAIL B
SCALE 1 : 3

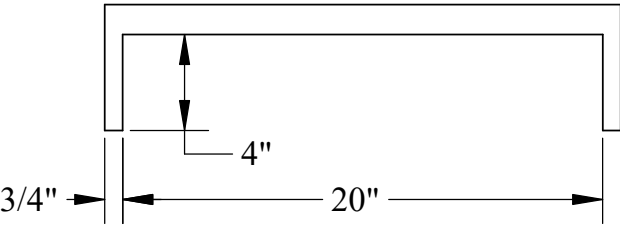
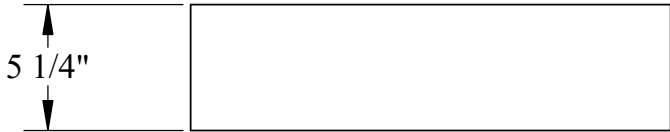
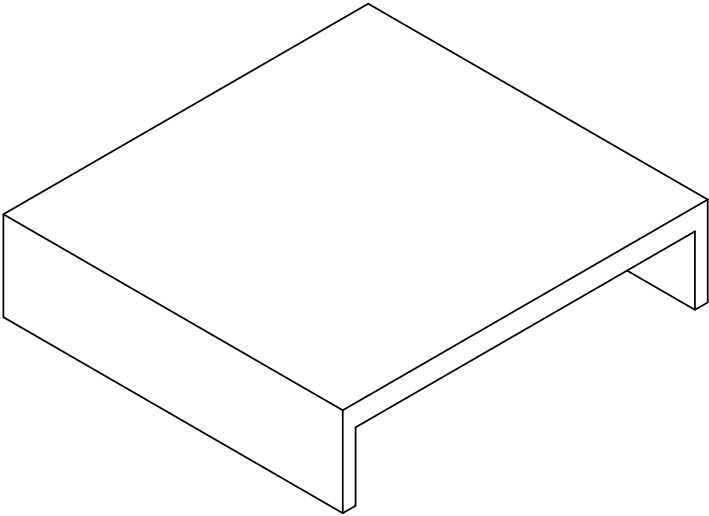
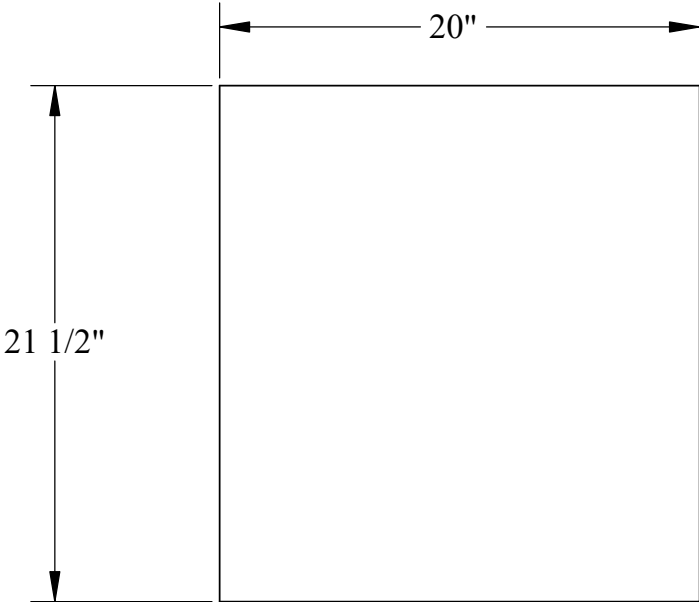
U.S.S. Monitor Steam Engine

Material STEEL	Drawn By - Date RWC 10-2018	Sub-Assembly Valve Chest
Weight (Lbs) 24.93	Valve Rod -Main Valve	
Scale 1:6		
Part # VC 5		



U.S.S. Monitor Steam Engine

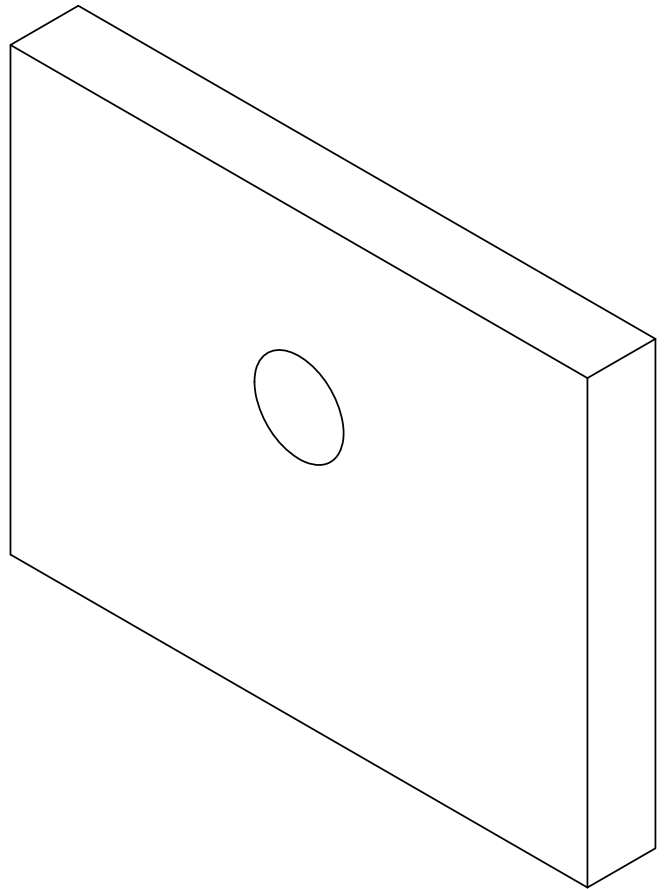
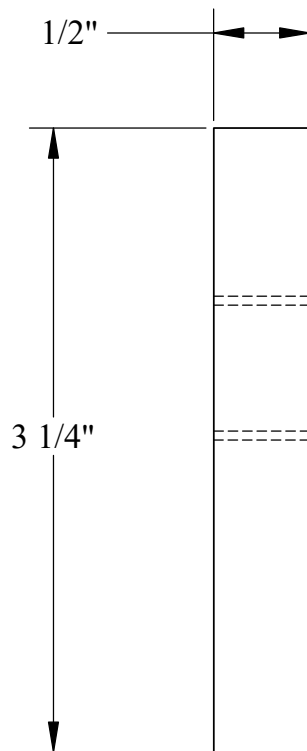
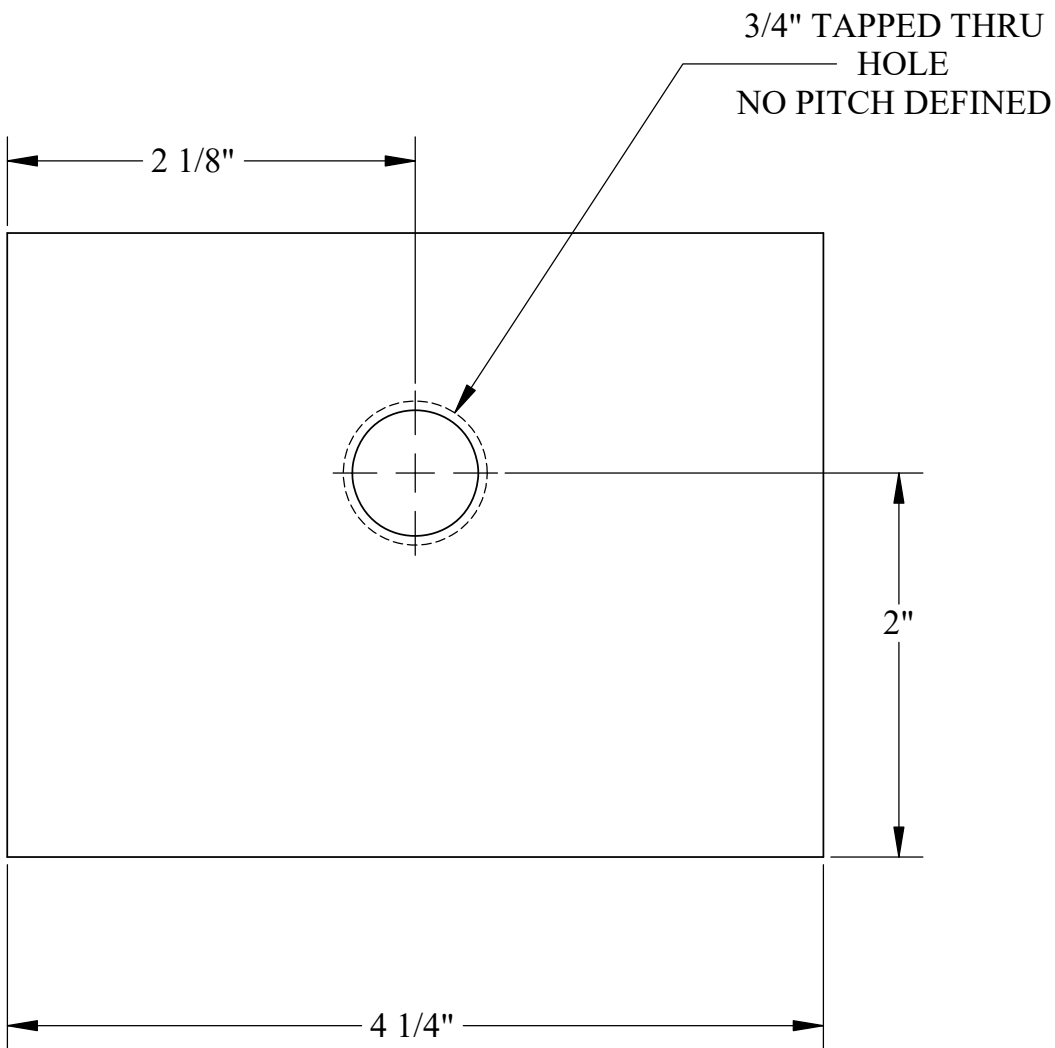
Material STEEL	Drawn By - Date RWC 10-2018	Sub-Assembly Valve Chest
Weight (Lbs) 1.13	Valve Rod Conical Washer	
Scale 1:1		
Part # VC 6		



NOTE:
THIS IS A VERY PRECISE PART OF THE MAIN VALVE.
MOST LIKELY IT WAS GROUND TO SIZE OR FITTED
BY AN EXPERT MACHINIST USING SCRAPING TECHNIQUES
THE CAVITY (4" X 20") WOULD HAVE A CLEARANCE OF .001" TOTAL
TO THE MAIN VALVE (VC 4) TO PREVENT STEAM LOSS
PARALLELISM WAS ALSO OF THE UTMOST IMPORTANCE

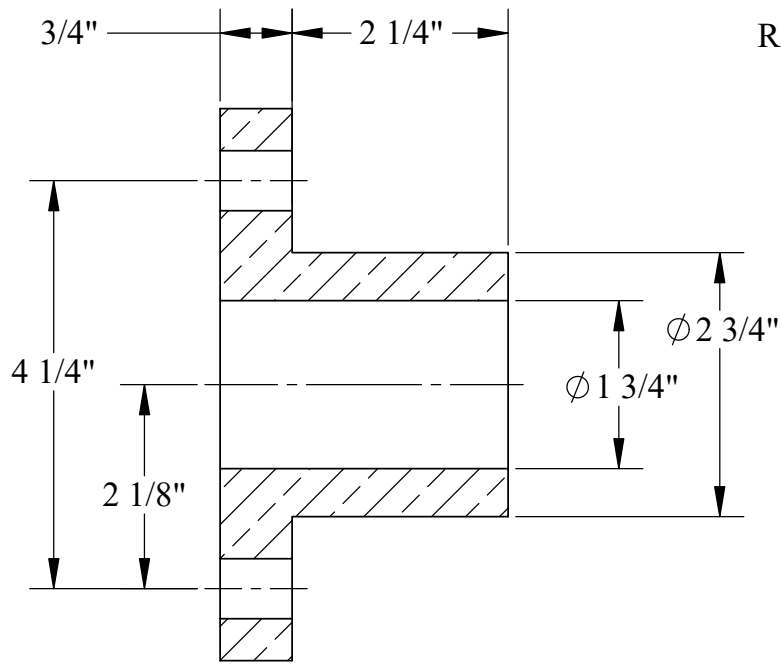
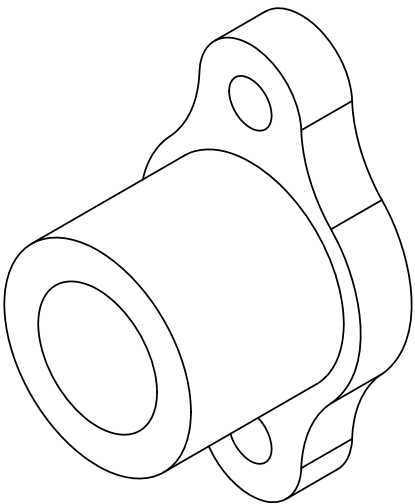
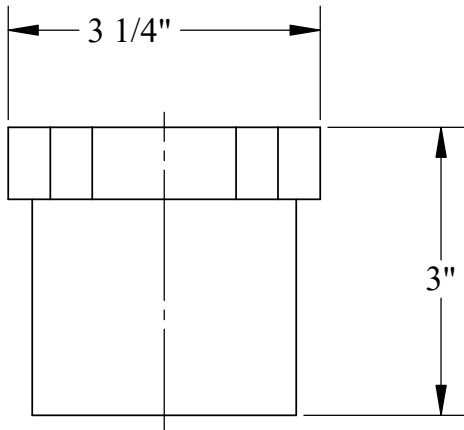
U.S.S. Monitor Steam Engine

Material Cast Iron	Drawn By - Date RWC 10-2018	Sub-Assembly Valve Chest
Weight (Lbs) 171.03	Description <div>Balanced Valve Bonnet</div>	
Scale 1:8		
Part # VC 7		

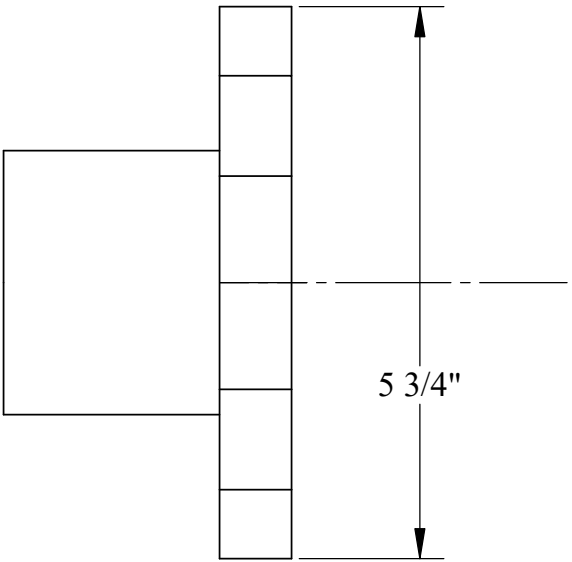
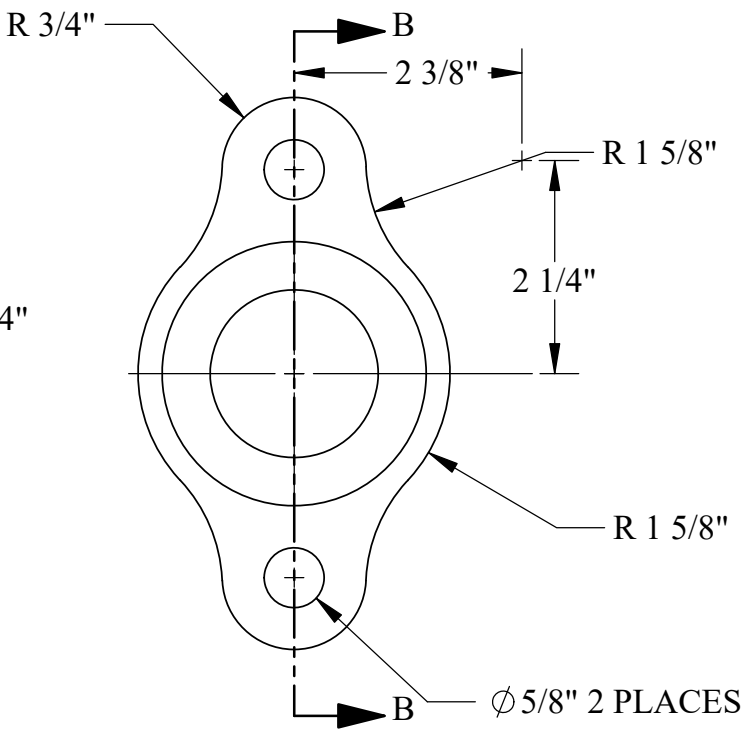


U.S.S. Monitor Steam Engine

Material Cast Iron	Drawn By - Date RWC 10-2018	Sub-Assembly Valve Chest
Weight (Lbs) 1.75	Balanced Valve Bonnet Spacer	
Scale 1:1		
Part # VC 8		

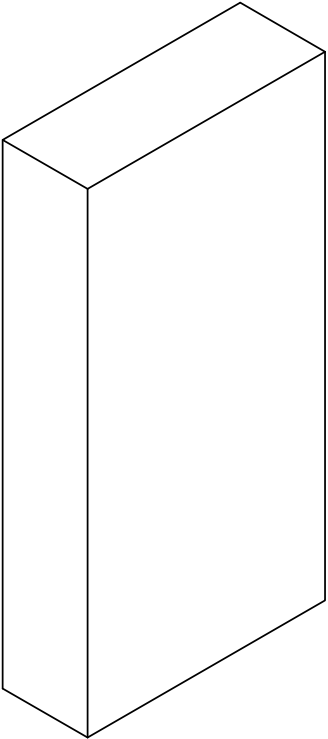
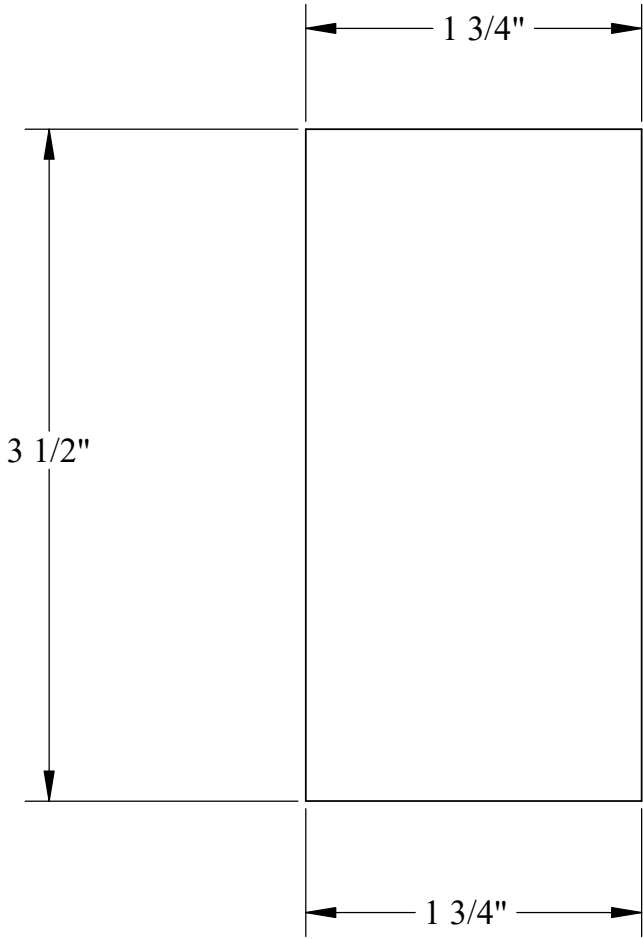
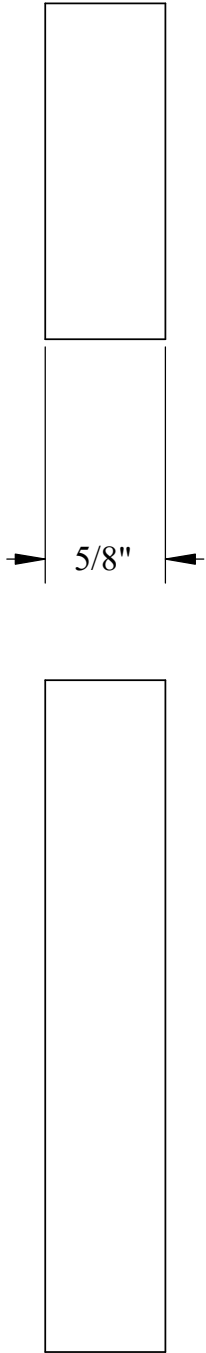


SECTION B-B



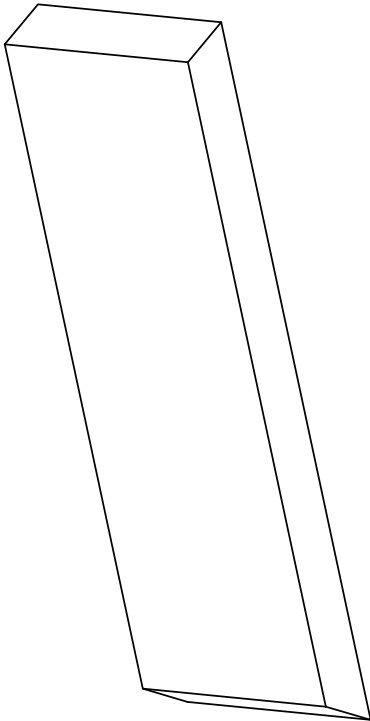
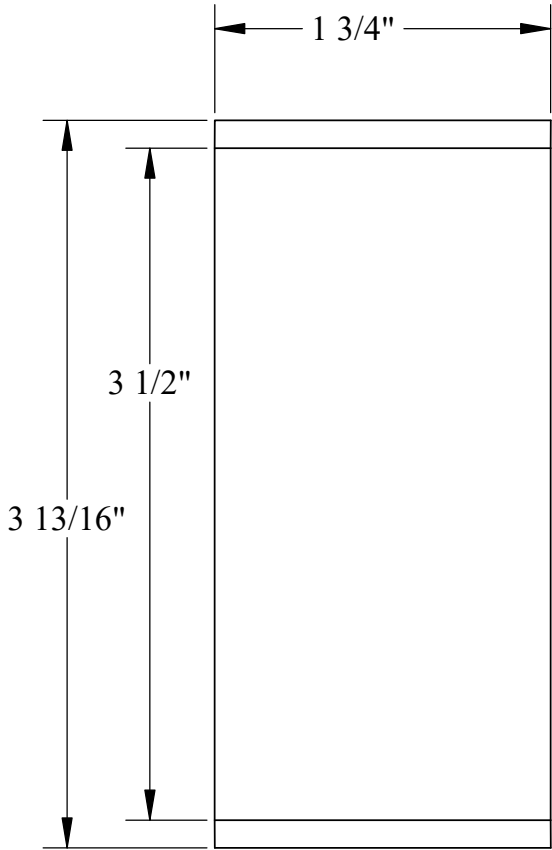
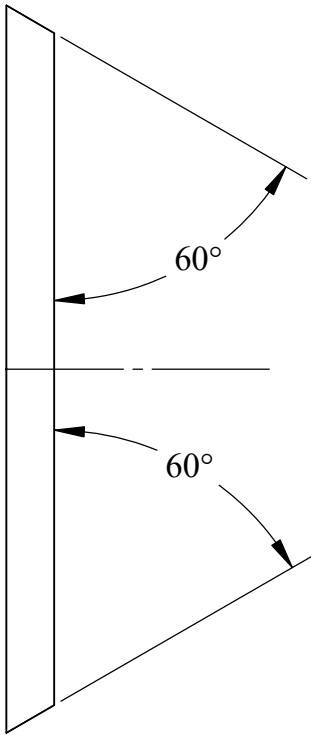
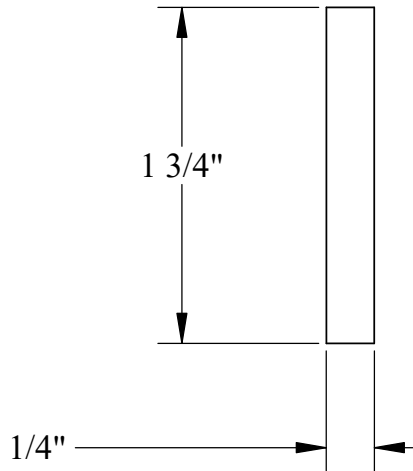
U.S.S. Monitor Steam Engine

Material Brass	Drawn By - Date RWC 10-2018	Sub-Assembly Valve Chest
Weight (Lbs) 4.52	Valve Rod Packing Gland	
Scale 1:2		
Part # VC 9		



U.S.S. Monitor Steam Engine

Material Brass	Drawn By - Date RWC 10-2018	Sub-Assembly Valve Chest
Weight (Lbs) 1.18	Valve Rod Box Way Insert	
Scale 1:1		
Part # VC 10		



NOTE:
THIS STEEL INSERT IS
HARDENED BY EXPOSURE TO
CARBON/HEAT AFTER BEING
MACHINED TO SIZE

U.S.S. Monitor Steam Engine

Material STEEL	Drawn By - Date RWC 10-2018	Sub-Assembly Valve Chest
Weight (Lbs) 0.46	Description Valve Rod Hardened Insert	
Scale FULL		
VC 11		